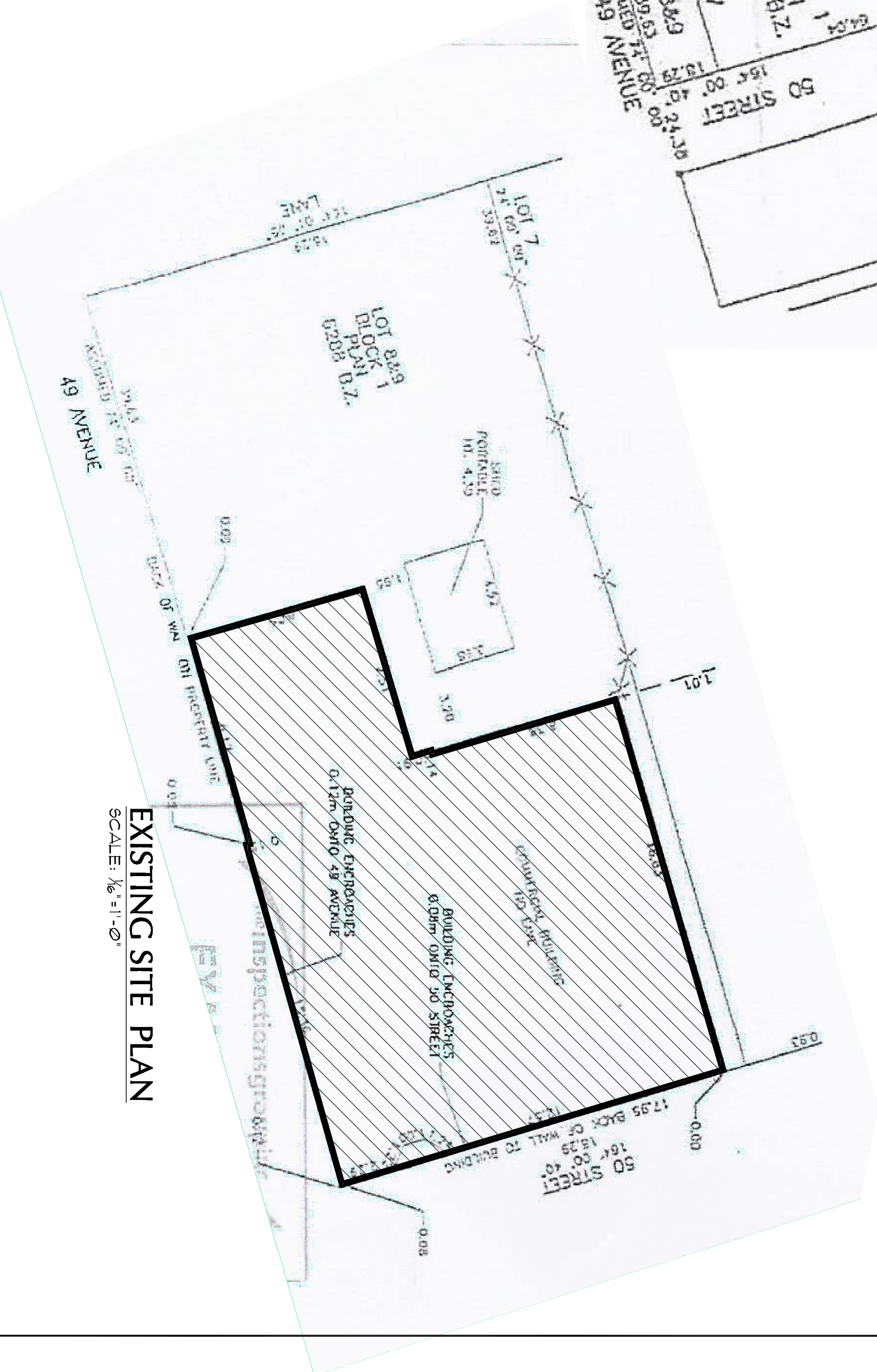




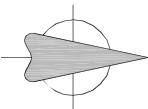
## LOCATION PLAN

NOT TO SCALE



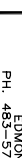




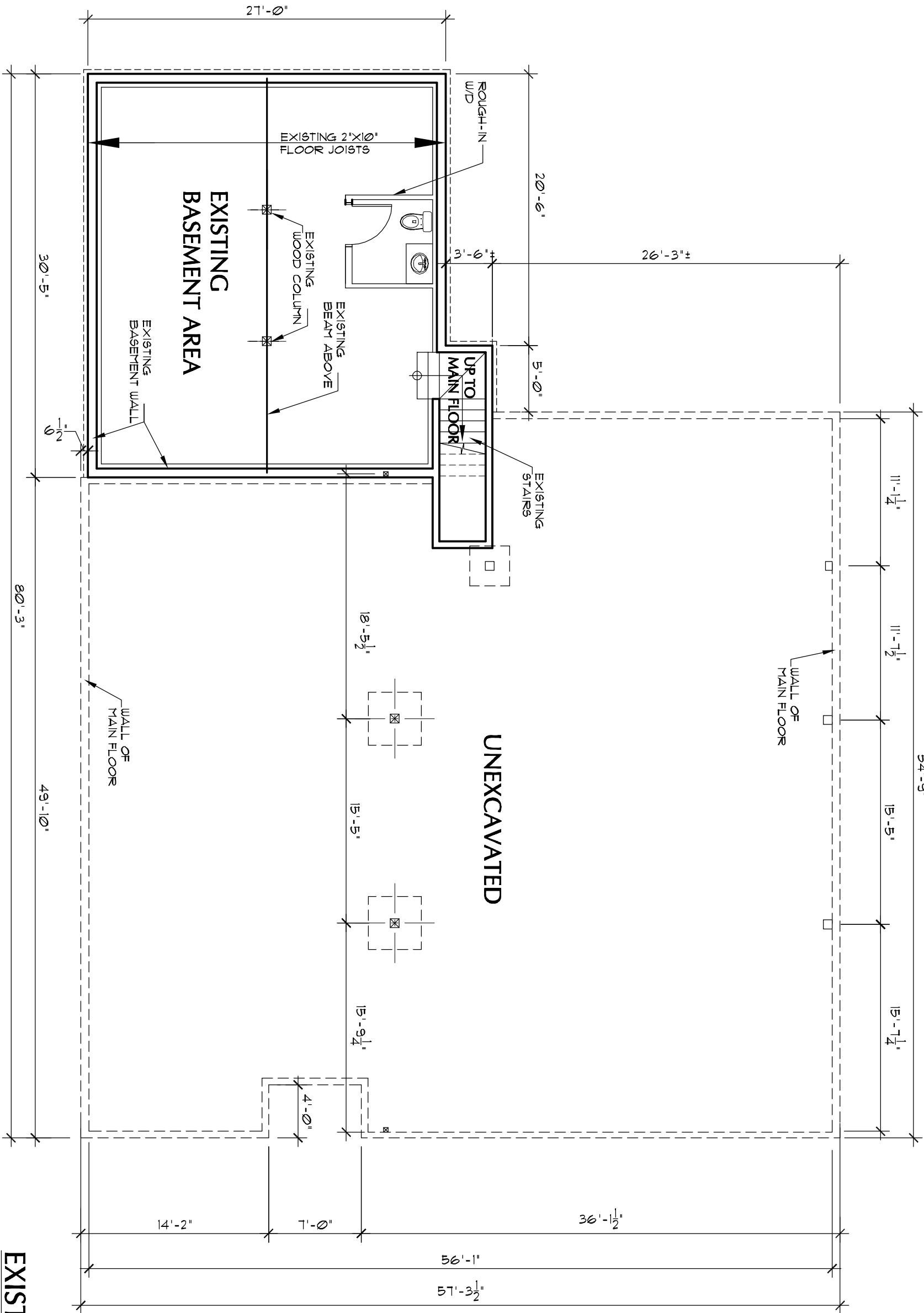
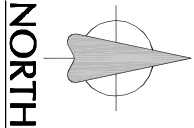
# EXISTING SITE PLAN

SCALE: 1/16" = 1'-0"



# NORTH

CONTRACTOR/BUILDER/OWNER MUST CHECK & VERIFY ALL DIMENSIONS ON THE DRAWINGS PRIOR TO COMMENCING ANY WORK. NOTIFY PENCIL POINTS OF SUCH ERROR OR OMISSION FOR CORRECTION.	
<b>DETAIL LEGEND</b> <div style="display: flex; justify-content: space-around; align-items: flex-start;"> <div style="text-align: center;">  <p><b>A</b></p> </div> <div style="text-align: center;">  <p><b>B</b></p> </div> <div style="text-align: center;">  <p><b>C</b></p> </div> </div> <div style="display: flex; justify-content: space-around; margin-top: 10px;"> <div>A DETAIL NO.</div> <div>B LOCATION DWG. NO.</div> <div>C DETAIL DWG. NO.</div> </div>	
<b>CONSULTANT</b> <div style="text-align: center;">  <p><b>PENCIL POINTS</b> DESIGN &amp; DRAFTING LTD.</p> </div> <div style="display: flex; justify-content: space-between; margin-top: 10px;"> <div>17306-106 AVENUE EDMONTON, ALBERTA PH. 483-5748 FAX 452-4762</div> </div>	
<b>GENERAL CONTRACTOR</b> <div style="text-align: center;">  <p><b>KEMWAY</b> BUILDERS INC.</p> </div> <div style="display: flex; justify-content: space-between; margin-top: 10px;"> <div>4203 - ROBERT ROAD EDMONTON, ALBERTA</div> </div>	
<b>PROJECT</b> <p style="text-align: center;"><b>ONOWAY YOUTH CENTRE ONOWAY, ALBERTA</b></p>	
<b>DRAWINGS</b> <p style="text-align: center;"><b>LOCATION PLAN &amp; EXISTING SITE PLAN</b></p>	
<b>COPYRIGHT</b> <p>These plans, design and ideas, can not be reproduced, copied or changed, nor can they be assigned to a third party without the written permission of Kemway Builders Inc. &amp; Pencil Points Design and Drafting LTD. Copyright laws allow for major penalties for copyright infringements such as indicated above.</p>	
<b>Date</b> <p style="text-align: center;"><b>DEC.17.2019</b></p>	<b>Scale</b> <p style="text-align: center;"><b>AS INDICATED</b></p>
<b>Drawn By</b> <p style="text-align: center;"><b>DDMG</b></p>	
<b>Checked by</b> <p style="text-align: center;"><b>CP, MCCRARTO</b></p>	
<b>Sheet No.</b> <p style="text-align: center;"><b>A1</b></p>	



# EXISTING BASEMENT PLAN

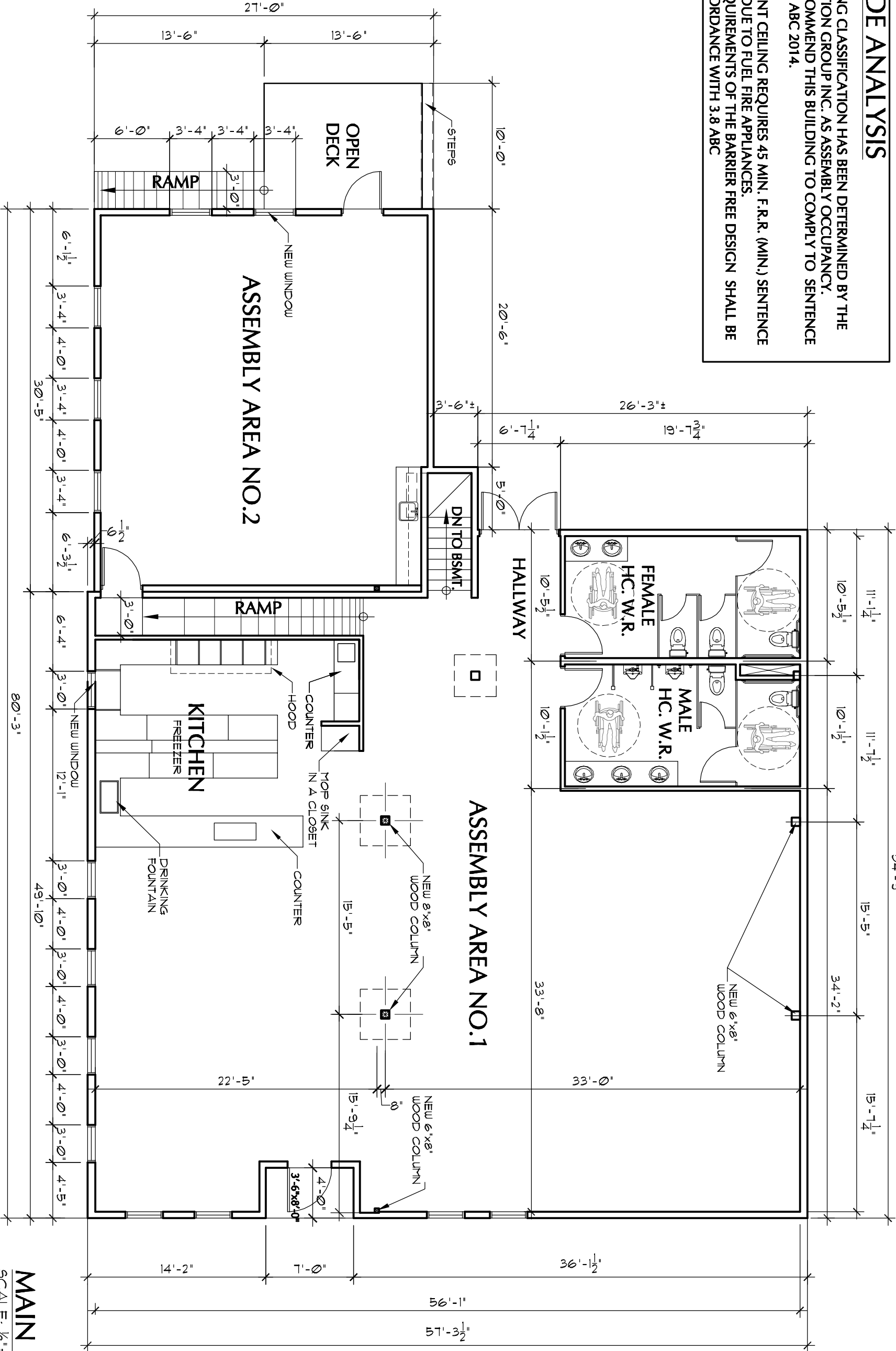
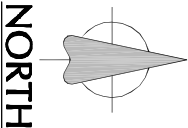
SCALE:  $\frac{1}{8}$ " = 1'-0"

CONTRACTOR/BUILDER/OWNER MUST CHECK & VERIFY ALL DIMENSIONS ON THE DRAWINGS PRIOR TO COMMENCING ANY WORK. NOTIFY PENCIL POINTS OF SUCH ERROR OR OMISSION FOR CORRECTION.		CONSULTANT		GENERAL CONTRACTOR		PROJECT		DRAWINGS		COPYRIGHT		Drawn By	Scale
DETAIL LEGEND		PENCIL POINTS DESIGN & DRAFTING LTD.		KEMWAY BUILDERS INC.		ONOWAY YOUTH CENTRE ONOWAY, ALBERTA		EXIST. BASEMENT PLAN		These plans, design and ideas, can not be reproduced, copied or changed, nor can they be assigned to a third party without the written permission of Kemway Builders Inc. & Pencil Points Design and Drafting LTD. Copyright laws allow for major penalties for copyright infringements such as indicated above.		JUN 28, 2020	AS INDICATED
A		17306-106 AVENUE		403 - 8088 ROAD						Drawn By		DOMO/ELMO	
B		EDMONTON, ALBERTA		EDMONTON, ALBERTA						Checked By		C.P. MACCARATO	
C		PH. 483-5748 FAX 452-4762								Sheet No.		A2	
DETAIL NUMBERS		TO											

CODE ANALYSIS

BUILDING CLASSIFICATION HAS BEEN DETERMINED BY THE INSPECTION GROUP INC. AS ASSEMBLY OCCUPANCY. WE RECOMMEND THIS BUILDING TO COMPLY TO SENTENCE 3.2.2.28 ABC 2014.

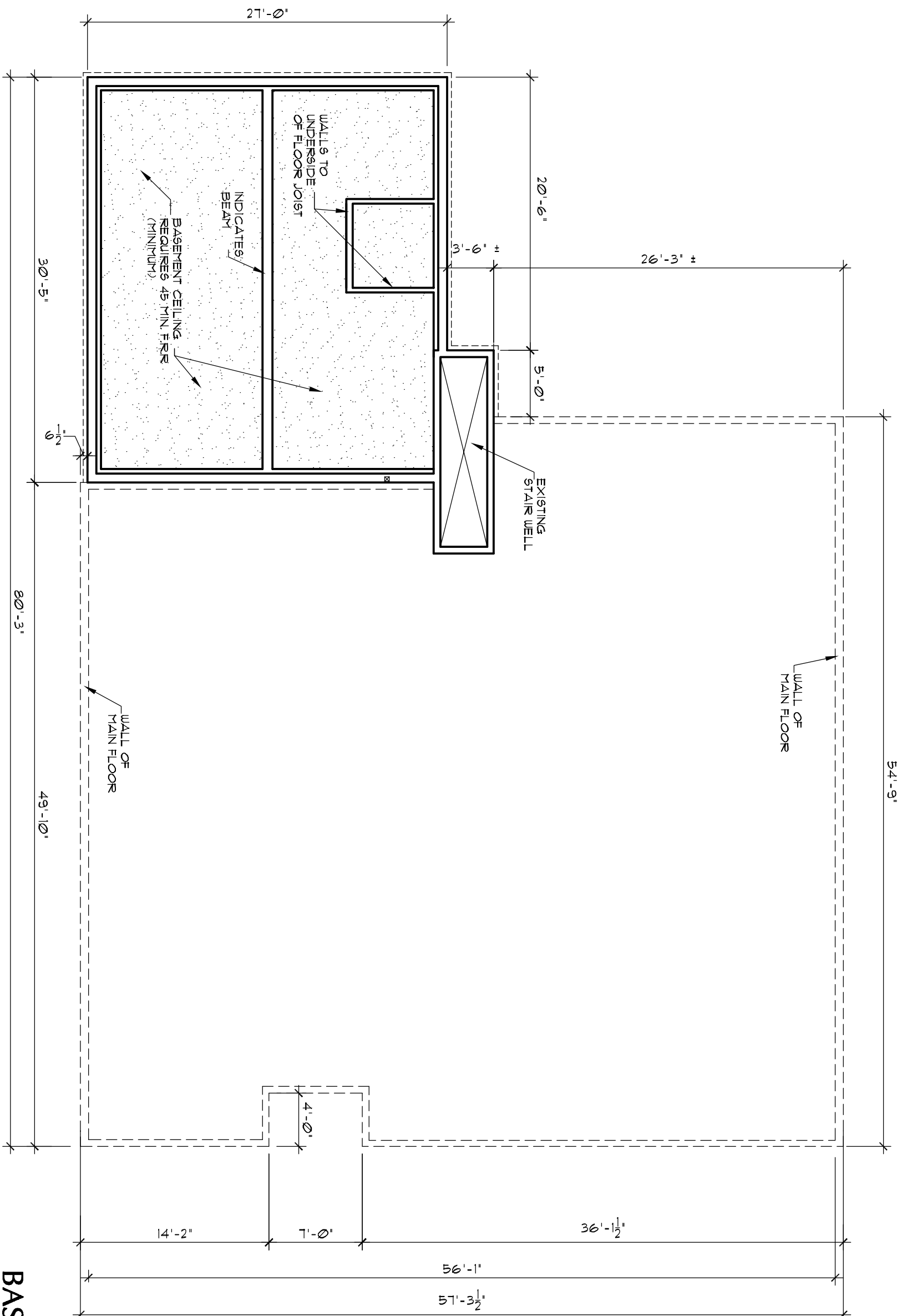
BASEMENT CEILING REQUIRES 45 MIN. F.R.R. (MIN.) SENTENCE 3.2.1.4 DUE TO FUEL FIRE APPLIANCES. ALL REQUIREMENTS OF THE BARRIER FREE DESIGN SHALL BE IN ACCORDANCE WITH 3.8 ABC



MAIN FLOOR PLAN

SCALE: 1/8" = 1'-0"


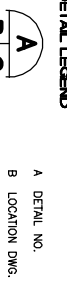
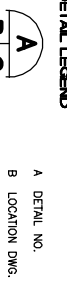
CONTRACTOR/BUILDER/OWNER MUST CHECK & VERIFY ALL DIMENSIONS ON THE DRAWINGS PRIOR TO COMMENCING ANY WORK. NOTIFY PENCIL POINTS OF SUCH ERROR OR OMISSION FOR CORRECTION.		CONSULTANT				GENERAL CONTRACTOR		PROJECT		DRAWINGS		COPYRIGHT		Date FEB.19,2020		Scale AS INDICATED	
<div>DETAIL LEGEND</div> <div><div><div>A</div><div>B</div><div>C</div></div><div><div>A</div><div>B</div><div>C</div></div><div><div>DETAIL NO.</div><div>LOCATION DWG. NO.</div><div>DETAIL DWG. NO.</div><div>TO</div></div></div>		<div><div>PENCIL POINTS</div><div>DESIGN &amp; DRAFTING LTD.</div><div><div>17306-106 AVENUE</div><div>EDMONTON, ALBERTA</div><div>PH. 483-5748 FAX 452-4762</div></div></div>				<div><div><div></div></div><div>KEMWAY</div><div>BUILDERS INC.</div><div>4203 - ROBERT ROAD</div><div>EDMONTON, ALBERTA</div></div>		<div><div>ONOWAY YOUTH CENTRE</div><div>ONOWAY, ALBERTA</div></div>		<div><div>MAIN FLOOR PLAN</div></div>		<div><div>These plans, design and ideas, can not be reproduced, copied or changed, nor can they be assigned to a third party without the written permission of Kemway Builders Inc. &amp; Pencil Points Design and Drafting LTD. Copyright laws allow for major penalties for copyright infringements such as indicated above.</div></div>		<div><div>Drawn By</div><div>DOMC/ELMO</div><div>Checked by</div><div>C.P. MACCARATO</div><div>Sheet No</div><div>A2.1</div></div>			

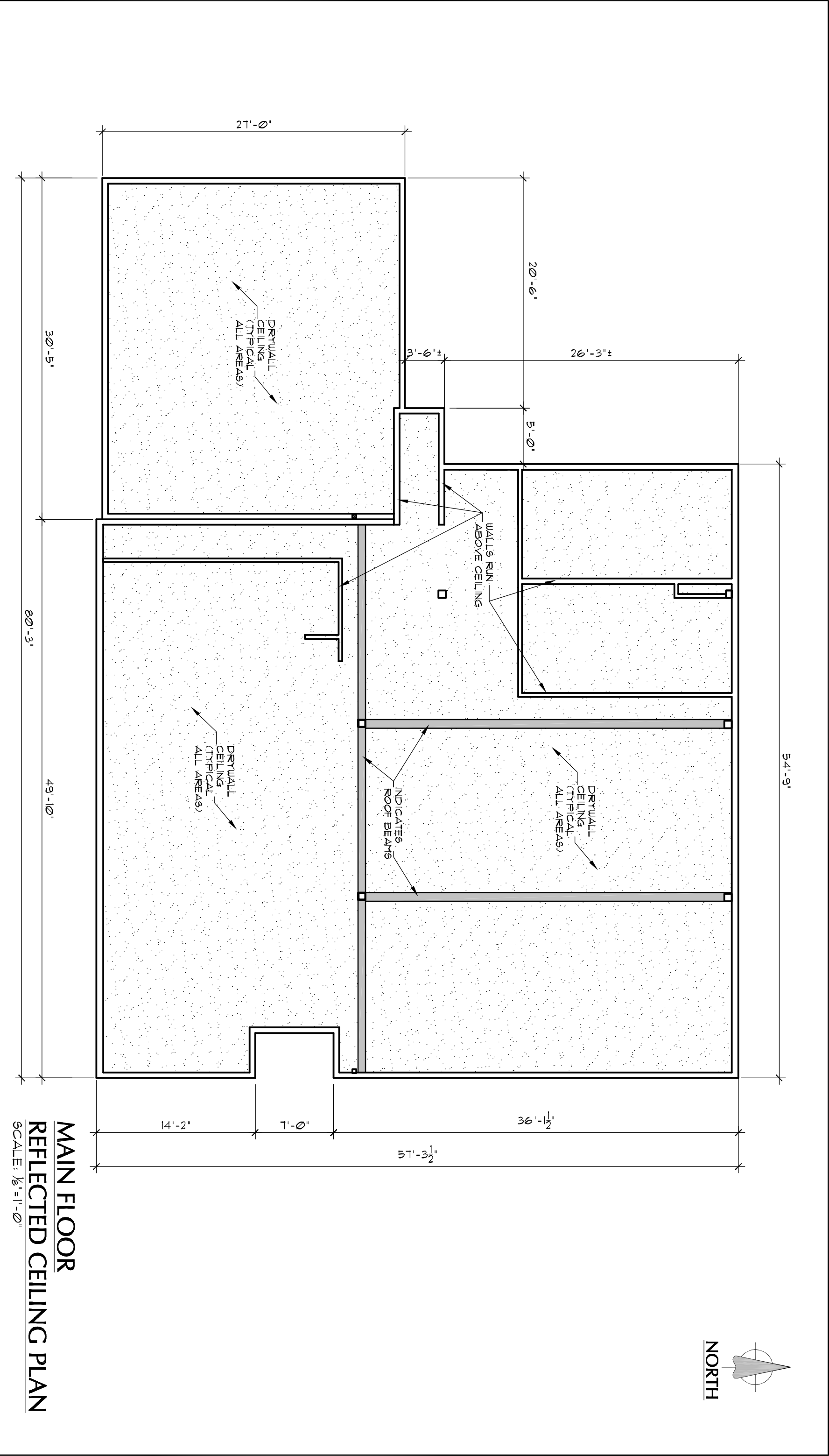
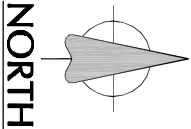


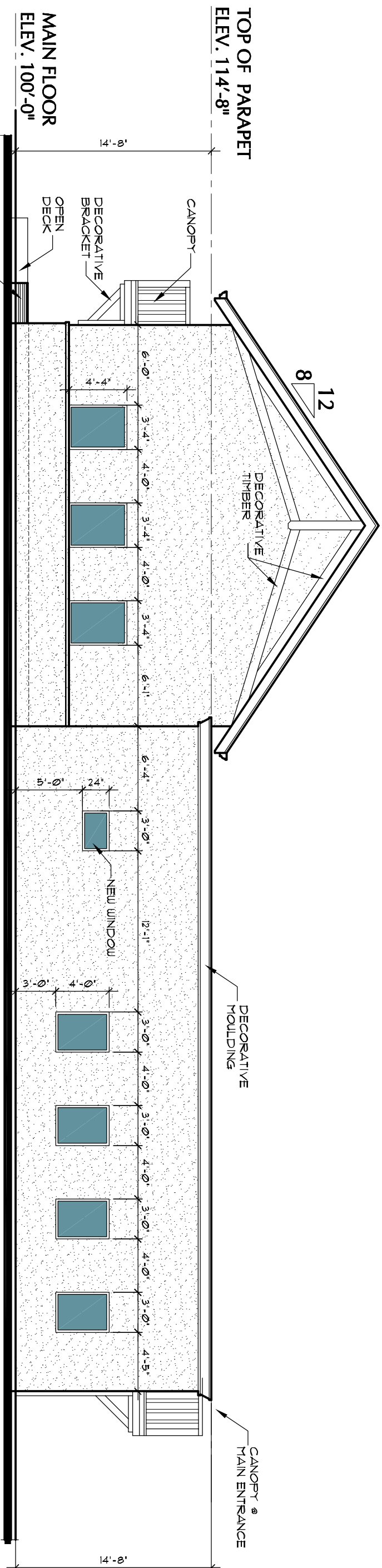
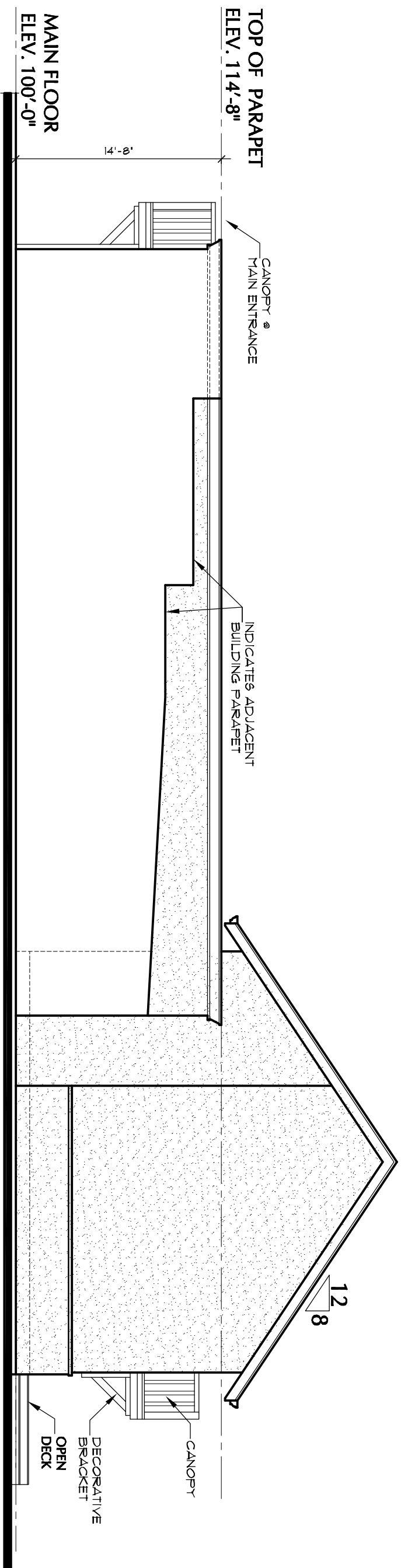
## BASEMENT

## REFLECTED CEILING PLAN

SCALE:  $\frac{1}{8}'' = 1'-0''$

CONTRACTOR/BUILDER/OWNER MUST CHECK & VERIFY ALL DIMENSIONS ON THE DRAWINGS PRIOR TO COMMENCING ANY WORK. NOTIFY PENCIL POINTS OF SUCH ERROR OR OMISSION FOR CORRECTION.	
<b>DETAIL LEGEND</b> <div style="display: flex; justify-content: space-around; align-items: center;"> <div style="text-align: center;">  <p><b>A</b></p> </div> <div style="text-align: center;"> <p><b>B</b></p> <p><b>C</b></p> </div> </div> <div style="display: flex; justify-content: space-around; margin-top: 10px;"> <div style="text-align: center;"> <p>A DETAIL NO.</p> <p>B LOCATION DWG. NO.</p> <p>C DETAIL DWG. NO.</p> </div> <div style="text-align: center;"> <p>TO</p> </div> </div>	
<b>CONSULTANT</b> <div style="text-align: center;">  <p><b>PENCIL POINTS</b> DESIGN &amp; DRAFTING LTD.</p> </div> <div style="display: flex; justify-content: space-around; margin-top: 10px;"> <div style="text-align: center;"> <p>17308-108 AVENUE EDMONTON, ALBERTA PH. 483-5748 FAX 452-4762</p> </div> </div>	
<b>GENERAL CONTRACTOR</b> <div style="text-align: center;">  <p><b>KEMWAY</b> BUILDERS INC.</p> </div> <div style="display: flex; justify-content: space-around; margin-top: 10px;"> <div style="text-align: center;"> <p>4203 - ROYER ROAD EDMONTON, ALBERTA</p> </div> </div>	
<b>PROJECT</b> <p style="text-align: center;"><b>ONOWAY YOUTH CENTRE</b> <b>ONOWAY, ALBERTA</b></p>	
<b>DRAWINGS</b> <p style="text-align: center;"><b>BSMT. REFLECTED CEILING PLAN</b></p>	
<b>COPYRIGHT</b> <p>These plans, design and ideas, can not be reproduced, copied or changed, nor can they be assigned to a third party without the written permission of Kemway Builders Inc. &amp; Pencil Points Design and Drafting LTD. Copyright laws allow for major penalties for copyright infringements such as indicated above.</p>	
<b>Date</b> <p><b>DEC.17.2019</b></p>	<b>Scale</b> <p><b>AS INDICATED</b></p>
<b>Drawn By</b> <p><b>DNMG</b></p>	
<b>Checked by</b> <p><b>CP, MACCARATO</b></p>	
<b>Sheet No.</b> <p style="font-size: 2em;"><b>A2.2</b></p>	




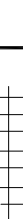



## NORTH ELEVATION

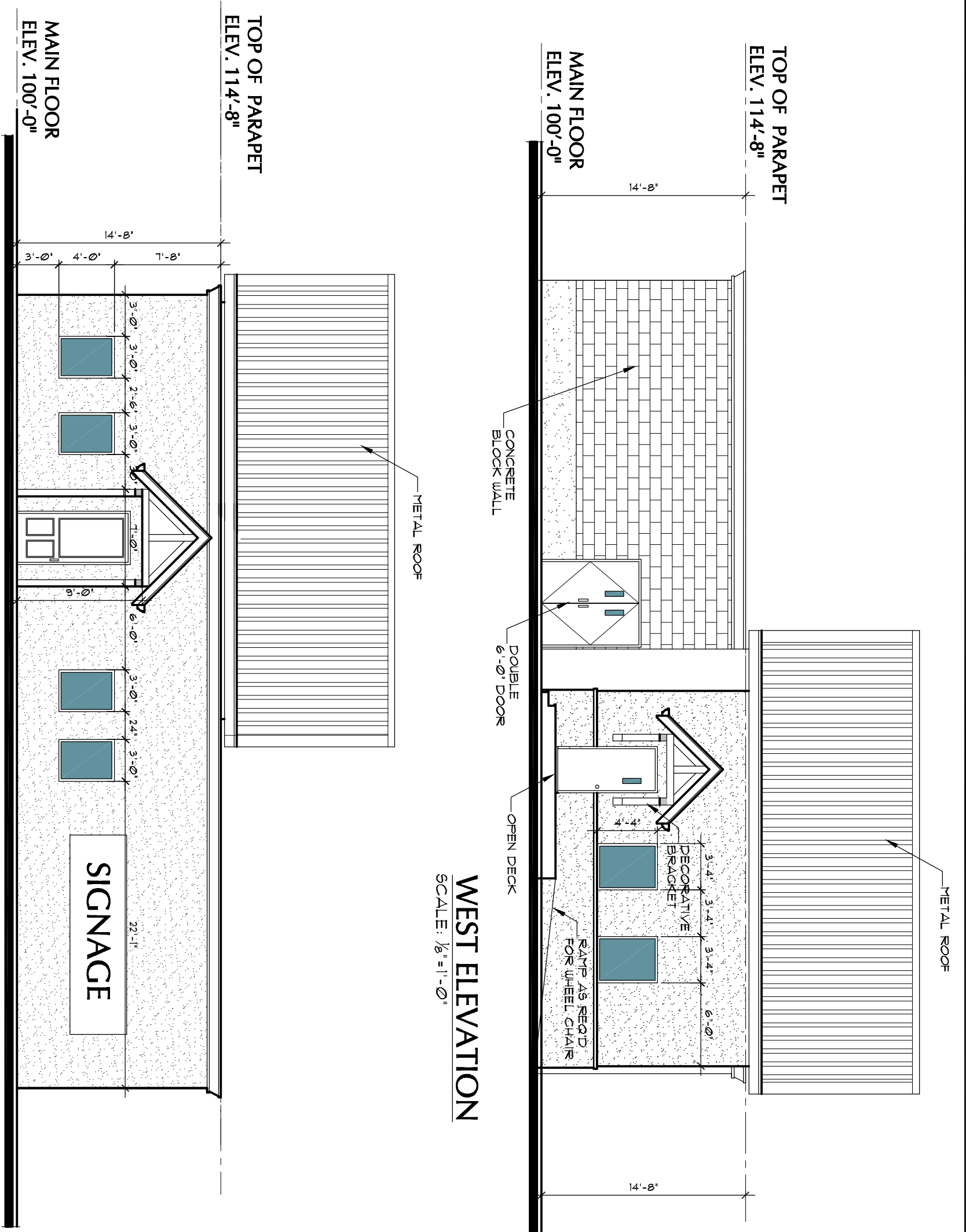
SCALE: 1/8" = 1'-0"

## SOUTH ELEVATION

SCALE: 1/8" = 1'-0"

CONTRACTOR/BUILDER/OWNER MUST CHECK & VERIFY ALL DIMENSIONS ON THE DRAWINGS PRIOR TO COMMENCING ANY WORK. NOTIFY PENCIL POINTS OF SUCH ERROR OR OMISSION FOR CORRECTION.		<b>CONSULTANT</b>	
<b>DETAIL LEGEND</b> <div style="display: flex; justify-content: space-around; align-items: center;"> <div style="text-align: center;">  <p><b>A</b></p> </div> <div style="text-align: center;"> <p><b>B</b></p> <p><b>C</b></p> </div> </div> <div style="display: flex; justify-content: space-around; margin-top: 10px;"> <div style="text-align: center;"> <p>A DETAIL NO.</p> <p>B LOCATION DWG. NO.</p> <p>C DETAIL DWG. NO.</p> </div> <div style="text-align: center;"> <p>TO</p> </div> </div>		<div style="text-align: center;">  <p><b>PENCIL POINTS</b> DESIGN &amp; DRAFTING LTD.</p> </div> <div style="text-align: center; margin-top: 10px;"> <p>17308-108 AVENUE EDMONTON, ALBERTA PH. 483-5748 FAX 452-4762</p> </div>	
<b>GENERAL CONTRACTOR</b> <div style="text-align: center;">  <p><b>KEMWAY</b> BUILDERS INC. 4203 - ROYER ROAD EDMONTON, ALBERTA</p> </div>		<b>PROJECT</b> <p style="text-align: center;"><b>ONOWAY YOUTH CENTRE</b> <b>ONOWAY, ALBERTA</b></p>	
<b>DRAWINGS</b> <p style="text-align: center;"><b>NORTH &amp; SOUTH ELEVATIONS</b></p>		<b>COPYRIGHT</b> <p>These plans, design and ideas, can not be reproduced, copied or changed, nor can they be assigned to a third party without the written permission of Kemway Builders Inc. &amp; Pencil Points Design and Drafting LTD. Copyright laws allow for major penalties for copyright infringements such as indicated above.</p>	
<b>Date</b> <p style="text-align: center;"><b>FEB. 19, 2020</b></p>		<b>Scale</b> <p style="text-align: center;"><b>AS INDICATED</b></p>	
<b>Drawn By</b> <p style="text-align: center;"><b>DONE/ELMO</b></p>			
<b>Checked by</b> <p style="text-align: center;"><b>C.P. MACCARATO</b></p>			
<b>Sheet No.</b> <p style="text-align: center;"><b>A3</b></p>			





CONTRACTOR/BUILDER/OWNER MUST CHECK & VERIFY ALL DIMENSIONS ON THE DRAWINGS PRIOR TO COMMENCING ANY WORK. NOTIFY PENCIL POINTS OF SUCH ERROR OR OMISSION FOR CORRECTION.		CONSULTANT		GENERAL CONTRACTOR		PROJECT		DRAWINGS		COPYRIGHT		Date: FEB.19.2020		Scale: AS INDICATED	
<b>DETAIL LEGEND</b>		<b>PENCIL POINTS DESIGN &amp; DRAFTING LTD.</b>		<b>KENWAY BUILDERS INC.</b>		<b>ONOWAY YOUTH CENTRE ONOWAY, ALBERTA</b>		<b>NORTH &amp; SOUTH ELEVATIONS</b>		These plans, design and ideas, can not be reproduced, copied or changed, nor can they be assigned to a third party without the written permission of Kenway Builders Inc. & Pencil Points Design and Drafting LTD. Copyright laws allow for major penalties for copyright infringements such as indicated above.		Drawn By: <b>DONIC/ELMO</b>			
<b>DETAIL NUMBERS</b>		PH. 483-5748 FAX 452-4762		403 - ROPER ROAD EDMONTON, ALBERTA								Checked By: <b>C.P. MACCARATO</b>			
												Sheet No: <b>A3.1</b>			