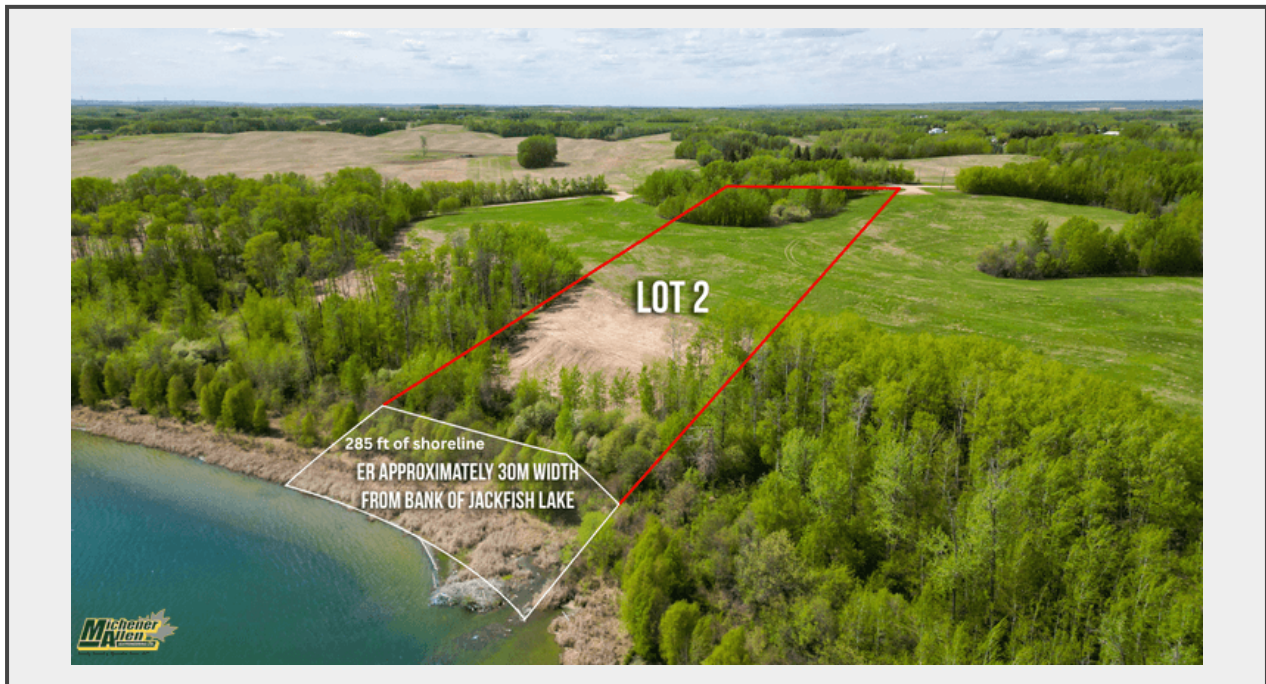


Sale Name: June 20, 2024 Real Estate Auction

LOT 4 - Jackfish LakeFront - Lot 2



Legal Land Description Estate Lakefront

Acres 5.46 +/-

Comments MLS #E4377333 / Over 5 acres and 285 ft of shoreline awaits.

Location Jackfish Lake Alberta

Description

REFER TO "TERMS" TAB FOR REAL ESTATE TERMS & CONDITIONS.

Jackfish Lake - RANGE ROAD 24 & TOWNSHIP ROAD 524
Parkland County, AB

MLS #E4377333 / Over 5 acres and 285 ft of shoreline awaits.

[Realtor Listing Click Here](#)

4.79 - 36.2 ACRES

Estate Lakefront

Build your dream estate on Lot #2! Over 5 acres and 285 ft of shoreline awaits. Luxury Lakefront living on the shores of Jackfish Lake. Only 20 minutes to Stony Plain/Spruce Grove and 45 minutes to downtown Edmonton. Jackfish Lake is one of the cleanest lakes around Edmonton & is ideal for watersports, recreational boating, swimming and fishing. The water depth has a quick drop off allowing for the convenience of a shorter dock length. Power and gas at property line. Welcome to endless outdoor activities and a private, tranquil lakefront lifestyle.

Quantity: 1



<https://www.maauctions.com/>